

Easter cardboard frame

Instructions No. 2440

Difficulty: Beginner 🍃🍃🍃🍃

Working time: 2 Hours

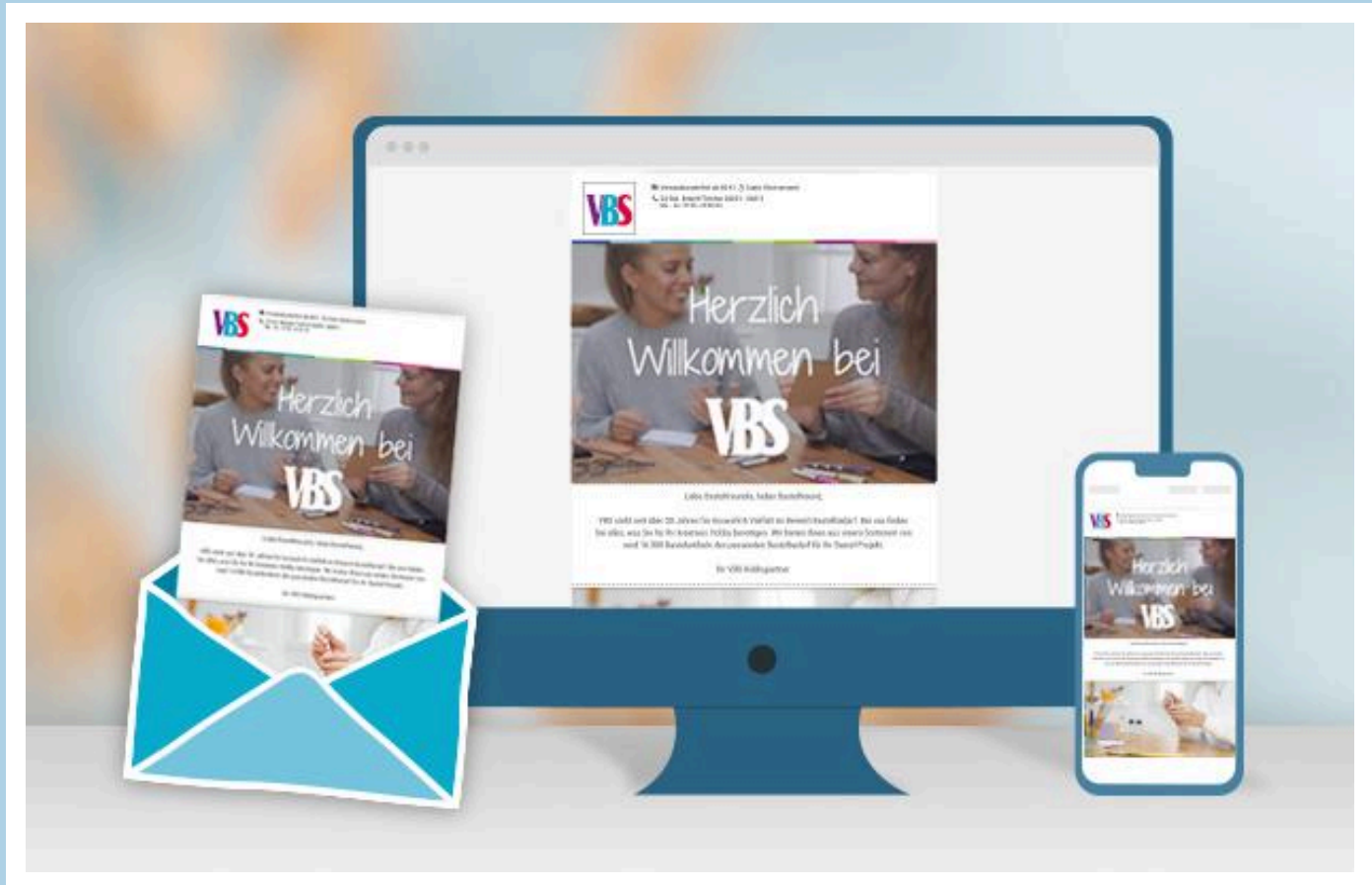
Create a beautiful Easter scene in a cardboard frame from linen cardboard. Decorate it with a string of lights to create an impressive decoration for your home.



Easter scene made of paper

1. Prime the cardboard frame with white craft paint. After drying, paint the front narrow edge with beige paint. Let the paint dry.

2. Print out the free template and transfer the motifs onto the linen board. Cut everything out with silhouette scissors and a scalpel if necessary.
3. Use hot glue to attach bamboo skewers to the bottom of the back of the motifs and trim the ends to approx. 1 cm.
4. Hold the motifs in the cardboard frame where they will be fixed later. Mark the places where the skewers will sit and make a hole there with an awl.
5. Now you can fix the motifs in the cardboard frame. If necessary, you can use some glue to fix them in place.
6. Place the cardboard frame on the lamp foil and transfer the size of the outer frame onto the foil with a pencil. Cut the foil and fix it to the cardboard frame from behind with hot glue.
7. Finally, attach a string of lights to the front of the frame and behind the foil with hot glue.



New instructions

Straight to your inbox every week

register now >