

Floral decoration with stamped wooden box

Instructions No. 3047

Difficulty: Beginner 🎨🔪🔪🔪

Working time: 2 Hours

Are you looking for a beautiful **floral decoration**? Then we have just the thing for you! The bottles are decorated with glass paint and the **wooden box with stamps**. Easy to make and beautiful to look at.



This is how you design the vases in the wooden box:

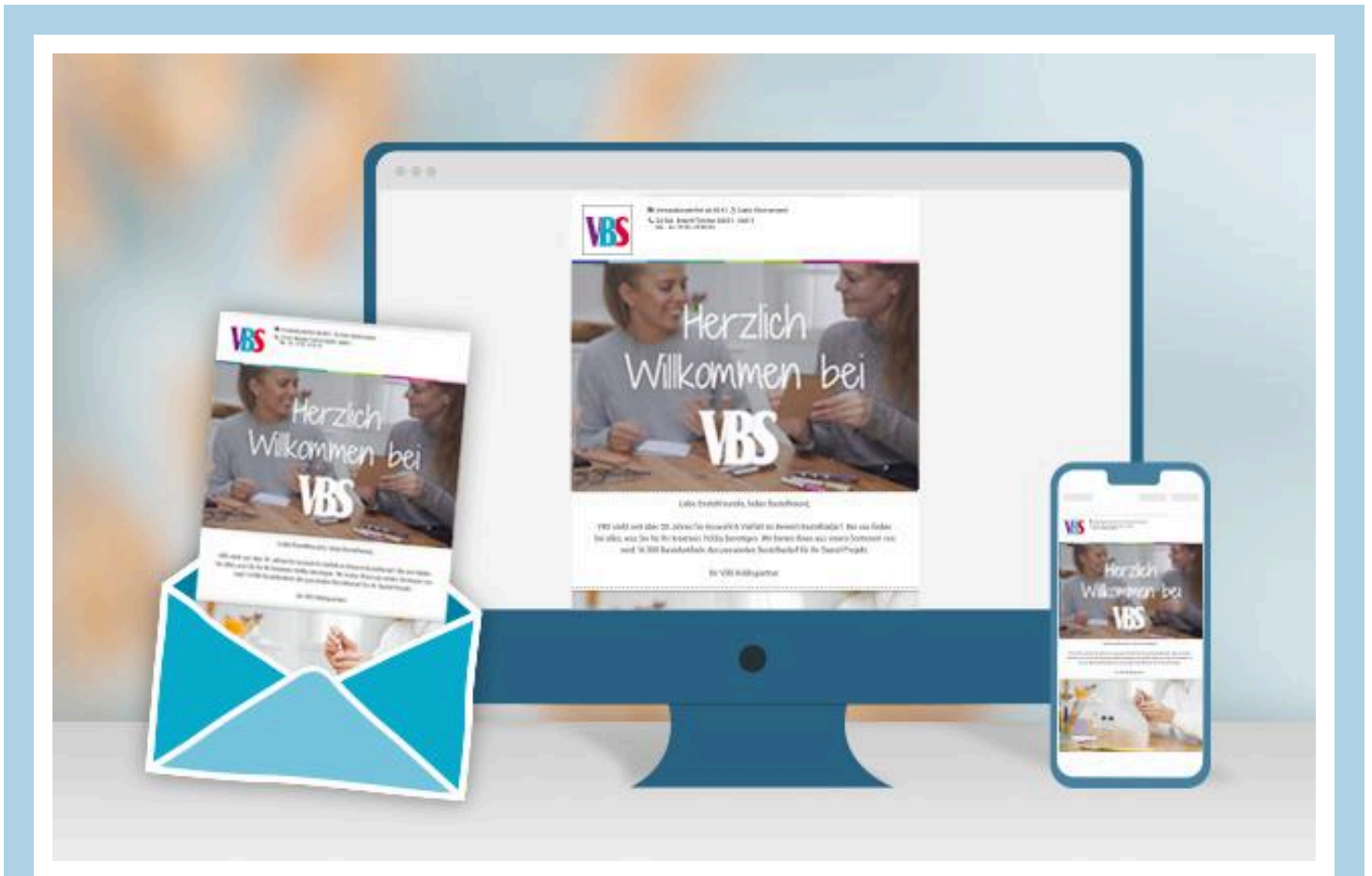
Dab the **glass bottles** with **KREUL Glass & Porcelain "Chalky" paint**.

After a Time to dry: of approx. 4 hour the painting can be baked at approx. 160 °C. To do this, place the object in a cold oven and only then turn on the oven. The baking time of 90 minutes only begins once the required temperature has been reached. To complete the baking process correctly, the object must cool down in the oven. The paint is then waterproof, dishwasher-safe and saliva-proof.

As long as the paint is not baked on, it can be easily removed with water.

The **wooden box** is first painted thinly with white **handicraft paint** and wiped over to create a pretty antique look . Then **stamp** the side walls. Paint the handles thinly with VBS handicraft glue and wrap with jute ribbon .

Place the **lavender** and the gypsophila into the glass bottles, shorten with the side cutter if necessary. Finally, place the glass vases in the wooden box.



New instructions

Straight to your inbox every week

register now >

Article information:

Article number	Article name	Qty
275682-05	KREUL Glass & Porcelain "ChalkyCandy Rose	1
61713010	VBS Lavender pick "Lavendula", 10 pieces	1
22602	VBS Gypsophila bunch "Florissa"White	1
15224	Stamp set "Leaves"	1
542708-07	Staz-On Stamp padStone Grey	1
330350	VBS Painting sponges, 3 pieces	1
970020	VBS Side cutter	1
22618	VBS Jute cord set "Juta"Cream/Nature/Pink	1
111065	VBS Handicraft glue85 g	1