

# Good mood spring gnomes

Instructions No. 2747

Difficulty: Beginner 🍴🍴🍴🍴

Working time: 2 Hours

The little spring gnomes can be copied with little effort. You create with figure cones, some felt and fairy wool as a beard your own little personalities, which will certainly provide good humor in your home.



First paint small wooden hemispheres with old pink paint and glue them as small **noses** on the heads of the figures. Transfer the **motif template** to the felt, cut out all the parts.

If you glue the **caps** together on the sides, this will give them their conical shape. Note, however, that the hot glue should not be applied all the way to the top: you could burn yourself on it, and later you will also need a small opening.

The caps can now be glued to the **heads**. Wrinkles and creases are worked in right away.

The bodies get small **felt coats**.

Cut a strip of fairy wool about 1.5 cm wide for each of the **beards**, fold it once in the middle. Fix each one around the bottom of the nose and style each beard as you like.

Finally, decorate the spring gnomes with **flowers**. Choose small spring flowers and stick them in the top of the opening of the caps. Glue more flowers to floral stem wire. Wrap the wire around a pencil. This will give each flower stem an individual look.

Attach the finished flowers to the figures. Your hot glue strip can be hidden under the beard and robe when you do this.



First paint small wooden hemispheres with old pink paint and glue them as small **noses** on the heads of the figures. Transfer the **motif template** to the felt, cut out all the parts.

If you glue the **caps** together on the sides, this will give them their conical shape. Note, however, that the hot glue should not be applied all the way to the top: you could burn yourself on it, and later you will also need a small opening.

The caps can now be glued to the **heads**. Wrinkles and creases are worked in right away. The bodies get small **felt coats**.

Cut a strip of fairy wool about 1.5 cm wide for each of the **beards**, fold it once in the middle. Fix each one around the bottom of the nose and style each beard as you like.

Finally, decorate the spring gnomes with **flowers**. Choose small spring flowers and stick them in the top of the opening of the caps. Glue more flowers to floral stem wire. Wrap the wire around a pencil. This will give each flower stem an individual look.

Attach the finished flowers to the figures. Your hot glue strip can be hidden under the beard and robe when you do this.



First paint small wooden hemispheres with old pink paint and glue them as small **noses** on the heads of the figures. Transfer the **motif template** to the felt, cut out all the parts.

If you glue the **caps** together on the sides, this will give them their conical shape. Note, however, that the hot glue should not be applied all the way to the top: you could burn yourself on it, and later you will also need a small opening.

The caps can now be glued to the **heads**. Wrinkles and creases are worked in right away.

The bodies get small **felt coats**.

Cut a strip of fairy wool about 1.5 cm wide for each of the **beards**, fold it once in the middle. Fix each one around the bottom of the nose and style each beard as you like.

Finally, decorate the spring gnomes with **flowers**. Choose small spring flowers and stick them in the top of the opening of the caps. Glue more flowers to floral stem wire. Wrap the wire around a pencil. This will give each flower stem an individual look.

Attach the finished flowers to the figures. Your hot glue strip can be hidden under the beard and robe when you do this.



First paint small wooden hemispheres with old pink paint and glue them as small **noses** on the heads of the figures. Transfer the **motif template** to the felt, cut out all the parts.

If you glue the **caps** together on the sides, this will give them their conical shape. Note, however, that the hot glue should not be applied all the way to the top: you could burn yourself on it, and later you will also need a small opening.

The caps can now be glued to the **heads**. Wrinkles and creases are worked in right away.

The bodies get small **felt coats**.

Cut a strip of fairy wool about 1.5 cm wide for each of the **beards**, fold it once in the middle. Fix each one around the bottom of the nose and style each beard as you like.

Finally, decorate the spring gnomes with **flowers**. Choose small spring flowers and stick them in the top of

the opening of the caps. Glue more flowers to floral stem wire. Wrap the wire around a pencil. This will give each flower stem an individual look.

Attach the finished flowers to the figures. Your hot glue strip can be hidden under the beard and robe when you do this.

## Must Have



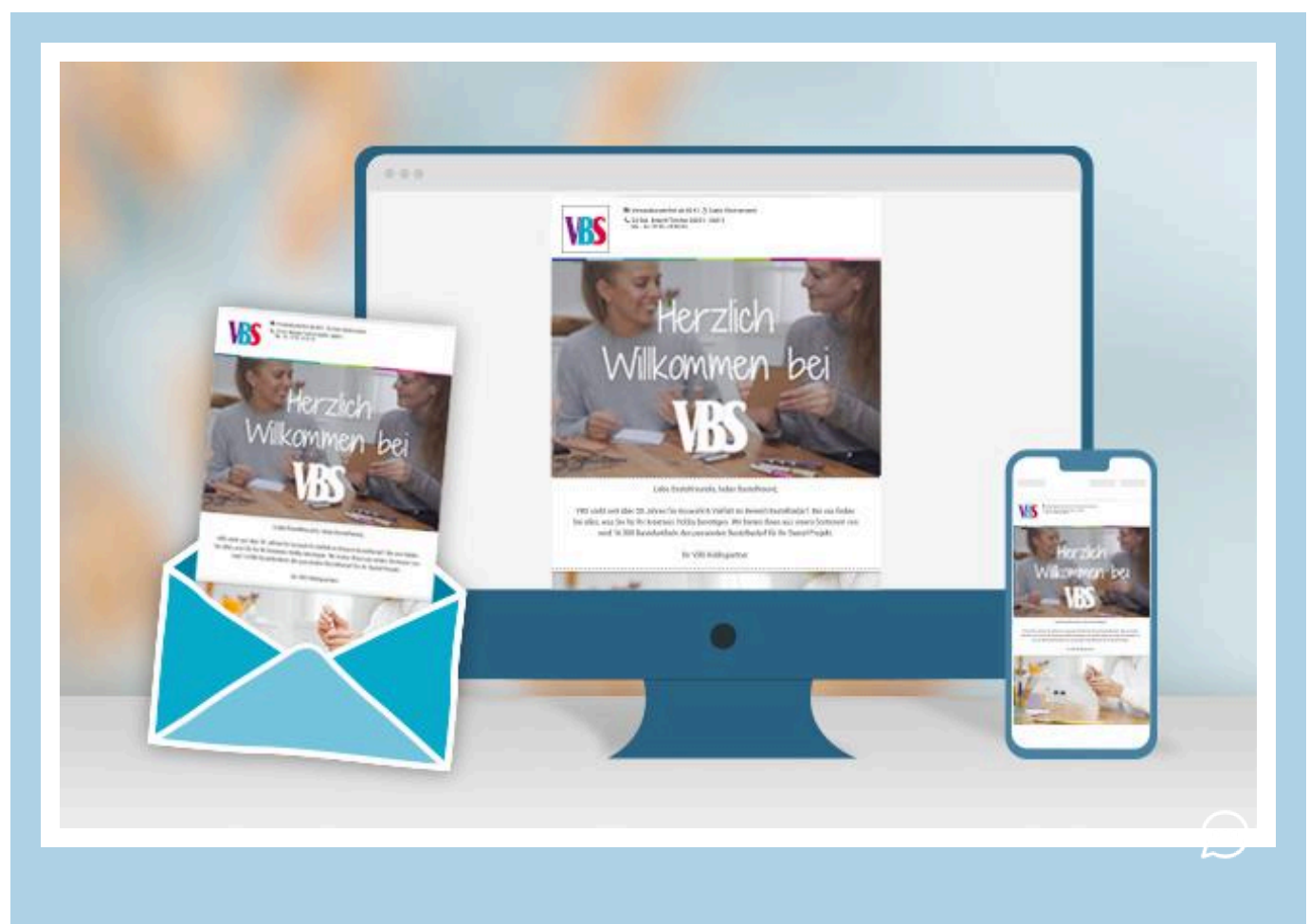
VBS figure cone

● **9,75 CHF**

[Item details](#)

Quantity: − 1 +

**Add to shopping cart**





# New instructions

Straight to your inbox every week

Register now >

## Article information:

Article number	Article name	Qty
11995	VBS Wooden hemispheres without hole, 10 piecesØ 10 mm	1
622356	VBS figure cone	1
650120-22	VBS Craft felt, 20 x 30 cmGolden yellow	1
650120-45	VBS Craft felt, 20 x 30 cmBlackberry	1
650120-24	VBS Craft felt, 20 x 30 cmPurple	1
650120-25	VBS Craft felt, 20 x 30 cmOrange	1
650120-32	VBS Craft felt, 20 x 30 cmGrass green	1
607544-03	Wool roving, 50 gWhite	1
616621	VBS Daisy blossoms, 50 pieces	1
17084	Scatter pieces flower and butterfly "Franca	1
19741	Floral wire, green	1