

# Wooden Ladder Decorate for Christmas

Instructions No. 2877

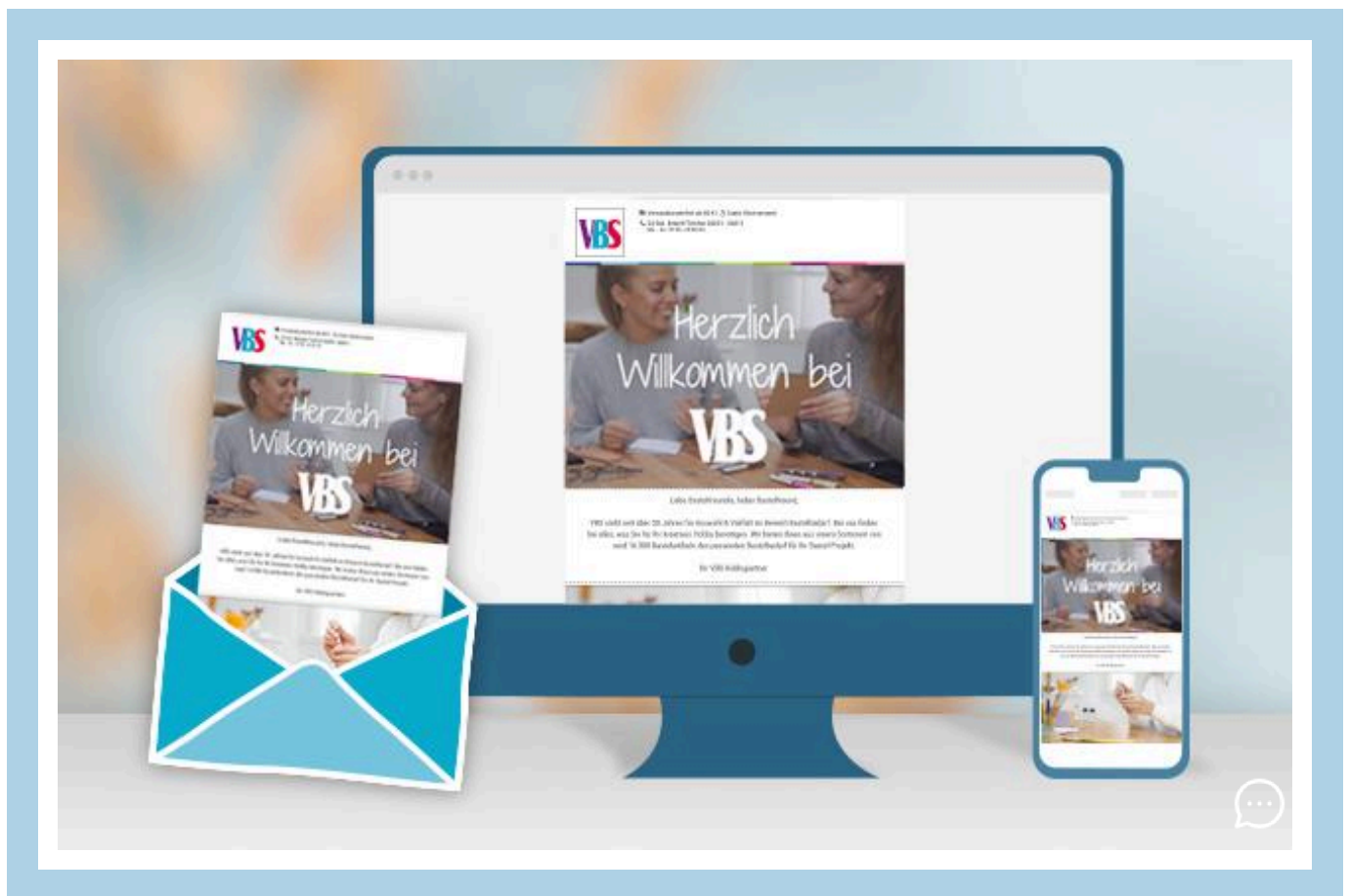
Difficulty: Beginner 🍷🍷🍷🍷

Working time: 3 Hours

This Christmas, let your creativity run wild and make a unique wooden ladder decoration for your home. Follow our instructions and create a charming decoration that will catch everyone's eye.



1. Start by preparing the wooden ladder. Carefully paint it with wood stain to give it a nice look. Let the stain dry well.
2. While the wood stain is drying, you can choose the letters for your desired lettering from the VBS Wooden Letter Mix. Spray these letters evenly with white spray paint. Let them dry well.
3. If you want to place the wooden ladder outdoors, we recommend applying a clear varnish for additional protection. This will make it last longer.
4. When everything is dry, you can wrap the Outdoor Micro LED light chain around the wooden ladder. Screw a screw hook into the wood and hang the battery compartment of the light chain on it. This will make it easier to change the batteries later.
5. Attach the previously sprayed lettering to the wooden ladder with hot glue. Make sure that it sticks well.
6. Attach the wooden spades, the VBS fir branches with berries and cones as well as the VBS fir trees and the deer "Snuggles" to the wooden ladder with hot glue. This will give your decoration that Christmas touch.
7. Finally, use the satin ribbon to complete the decoration. Attach it to the ladder as desired to add the finishing touch.
8. Your wooden ladder decoration is now finished and ready to be seen! Enjoy the result of your creative work.



# New instructions

Straight to your inbox every week

Register now >

## Article information:

Article number	Article name	Qty
12027	VBS Wooden ladder, 60 cm	1
663632	VBS Wooden letters	2
619011	VBS Fir branch with berries and cones	1
754415-16	Wood stain, 50 mlSweet Chestnut	1
15541	VBS fir trees and deer "Snuggles"	1
755276-22	edding 5200 "Permanentspray", silkmattTraffic white	1
755290	edding 5200 "Permanentspray", Clear varnish	1
133241	Screw hooks	1
51163	Hot glue gun, 15-80 Watt	1